



# ISENSE

DATA SHEET

# ISENSE

Evolved from Hanwell's existing range of established radio logging products the iSense is an innovative self contained unit enabling remote monitoring of diverse parameters via wireless GPRS technology.

Locations that previously seemed inaccessible including, buildings, machinery, infrastructure or vehicles can now easily be accessed and monitored.

A number of different sensors can be attached to the iSense in order to monitor parameters such as energy, temperature, pressure, structural stress and many more.

This real-time information is then transmitted via GPRS to a central database, and can be accessed immediately on a PC for viewing, recording and assessment. This range has been designed to comply with the RoHS and WEEE EU directives, and carries the CE mark.

## Product Features

- Completely self contained (battery operated)
- Date and time stamped monitoring
- Up to five year battery life
- Transmit rate increase on event
- Remote setup options
- Data stored in non volatile memory
- All data recovered in the event of temporary GPRS coverage problems
- Easy to understand journey profile information
- Works with a range of sensor families

## Benefits

- GPRS technology
- Non-Intrusive design
- Easy installation
- A wide range of monitoring parameters available
- Individual configuration options
- Easy reading management system
- Comprehensive analysis and data history
- Up to five year battery life

## Format

Data Logger	✘
Radio Transmitter	✘
GPRS	✔

## Data Logger Functions

**Network Compatibility:** For use on GSM/GPRS networks at 850MHz to 1900MHz (Quad Band)

**Aerial Connection:** SMA Socket

**Aerial Type:** Stubby straight/right angle and remote mount on 2mtrs cable

**Power Supply:** 5 x 1.5V alkaline C cells and/or optional 12V DC - Connection 2.1mm DC Jack

**Battery Life:** Up to 2 years

### Software Required:

W700 – Standard Synergy Software Package

W706 – Validated Synergy Software Package

W813 – Legacy RadioLog Standard Software Package for Museums

W400 – Legacy RadioLog Standard Software Package for Industrial

\*See Synergy datasheet for further options

**Accessories:** G204 – 1.5v alkaline C cell battery

G116 – DC power supply

G117 – UK power cord

G118 – EU power cord

G122 – US power cord

*This product can be calibrated to your specifications, contact us for further details.*

**N.B Instrument operating range -20°C to +60°C in a non-condensing RH environment.**

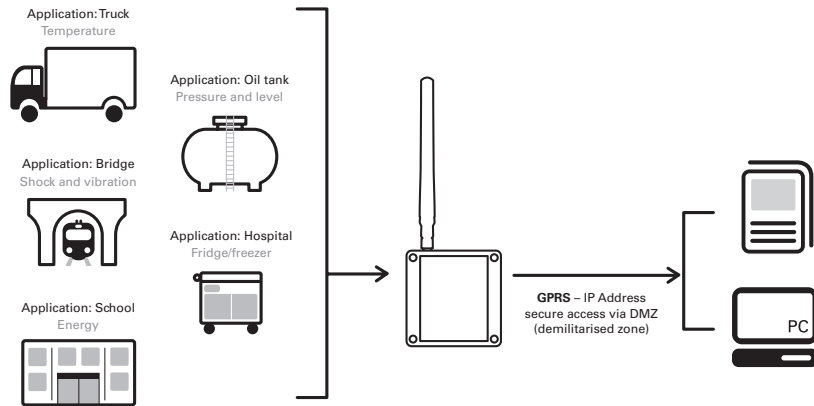
### Disclaimer

The information contained herein is believed to be reliable. The IMC Group Ltd is not responsible for any incorrect or incomplete information on this datasheet and the information or product may be changed without notice. Customers should obtain and verify the latest relevant information before placing orders for IMC products.



# Outdoor/Remote monitoring

Each iSense unit has durable hardware for long-term outdoor or remote monitoring solution and the most accurate sensors on the market. The data is transmitted via GPRS to a local network via DMZ collecting formats keep a record of historical data for regulatory compliance purposes.



*The diagram above illustrates how the iSense is typically used*



## Instrumentation Specification

**Dimensions:** 100 x 100 x 60 mm

**Weight:** 600grams

**Power Supply:** User replaceable 2 x alkaline 'D' cell Battery pack.

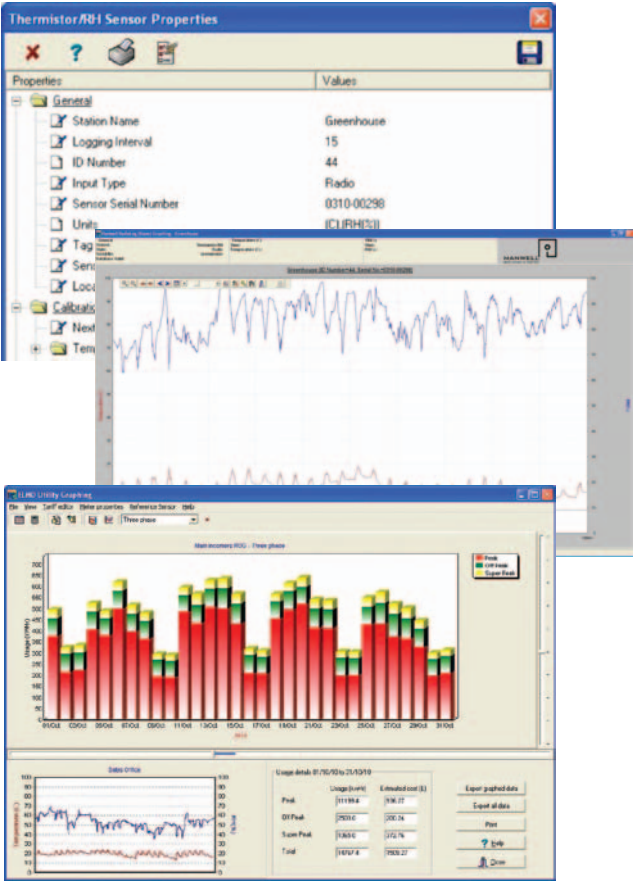
**Battery Life:** Up to five years (Based on one message a day i.e. 30 minute pulse count and no events enabled)

**Case Material:** ABS & PC

# Uncomplicated set-up capabilities

- Easy installation of software
- Clear set up capabilities
- Easily integrated into existing Hanwell monitoring system

The screen shot (right) is an example of the set-up capabilities available to the user.



# Straightforward data retrieval

- Immediate access to graphical data
- Date and time specific
- Clear visual and statistical evidence of iSense environmental conditions

These screen shots show typical results for an iSense transmitting data for temperature and humidity (above) and energy (right).

## Data Logger Functions

The part numbers for the iSense product range are constructed in four parts as follows:



### Where

- C1 = code for sensor on channel 1
- C2 = code for sensor on channel 2  
(00 = channel not used)
- C3 = code for sensor on channel 3  
(00 = channel not used)
- PS = power supply option

Currently available channel options include:

- Temperature
- Humidity
- Voltage
- Current
- Pulse Counting

Not all combinations are possible; please check with factory before ordering. For parameters not listed, please contact our sales team on +44 (0)1462 688070 or email sales@hanwell.com.

Each iSense unit requires a valid sim card contract and adequate network coverage at the intended location.



Intelligent monitoring and control solutions:  
**In Buildings | In Transit | Outdoor/Remote**

[Contact Us](#) for more information about how to apply our products to your application.

The IMC Group Limited, Pendle House, Jubilee Road, Letchworth, Hertfordshire SG6 1SP Tel: +44 (0)1462 688070 Web: [www.the-imcgroup.com](http://www.the-imcgroup.com)